

nuova

Coterm

boilers

24068 SERIATE (Bg) - Via Levata, 10

Tel. 035.290.665 - Fax 035.301.843

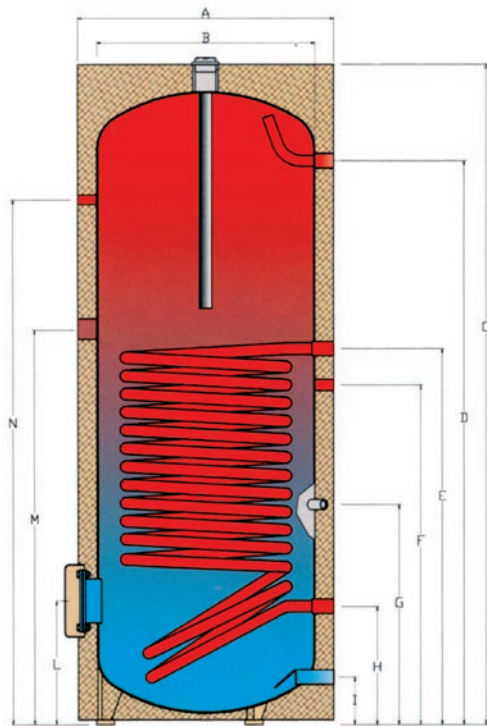
www.coterm.com - e-mail: info@coterm.com



Boilers

Serie SP

Ceramic-coated boiler with pipe coil



A	Outside boiler diameter
B	Inner boiler diameter
C	Boiler height
D	Hot water outlet
E	In-let pipe coil
F	Water feedback circuit
G	Probe connection
H	Pipe coil outlet
I	Cold water feeding
L	Flange diameter 180 mm
M	Electric resistance connection
N	Thermometer connection

	RESISTANCE	3 Kw 400 v Tri.
		4.5 Kw 400 v Tri.
		6 Kw 400 v Tri.
		9 Kw 400 v Tri.



The SP boilers with coil exchanger are built to satisfy the increasing hot water request.

The boiler is porcelain-glassed at 850° C strictly in compliance with the DIN 4753 norm; the magnesium anode, sized proportionally with the surface to be protected, ensure a long boiler durability against corrosion.

The heat insulation of the water is obtained with 50 mm rigid polyurethane thickness and with an external PVC cover coated with RAL-2004.

With the models 800 and 1000 lt, the insulation is made of 100 mm soft polyurethane layer.

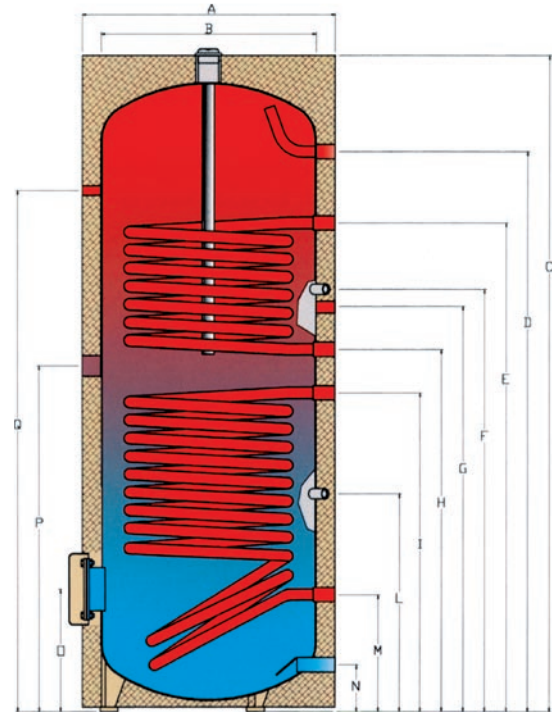
SP 150/1000 boiler max working pressure	10 bar
SP 1500/2000 boiler max working pressure	6 bar
Water max temperature	95° C

MOD. SP	A	B	C	D	E 5/4"	F	G 1/2"	H 5/4"	I	L	M 6/4"	N 1/2"	m ²	l/h - Kw 80-60°C 10-45°C	Kg	€
150	610	500	1005	775-1"	635	525-3/4"	475	265	155-1"	300	/	750	1	640-25	75	730.00
200	610	500	1290	1060-1"	675	785-3/4"	560	265	155-1"	300	705	1035	1.5	980-40	92	862.00
300	610	500	1680	1450-1"	905	785-3/4"	745	265	155-1"	300	930	1450	1.7	1250-50	108	986.00
400	710	600	1670	1420-1"	990	855-3/4"	775	305	175-1"	320	1025	1390	2	1410-57	130	1162.00
500	760	650	1680	1420-1"	995	850-3/4"	745	305	175-1"	310	1050		2.5	1750-70	155	1310.00
800	1000	800	1870	1585-5/4"	1045	895-1"	835	355	235-5/4"	390	1095	1470	3.4	2430-98	226	2018.00
1000	1000	800	2120	1835-5/4"	1180	1045-1"	925	355	235-5/4"	390	1245	1620	4	2950-120	260	2244.00
1500	1200	1000	2225	1930-6/4"	1150	1530-1"	780	450	330-6/4"	580	1250	1745	4	2470-100	330	3750.00
2000	1400	1200	2180	1770-6/4"	1190	1470-1"	815	490	370-6/4"	620	1240	1640	4.5	3320-135	400	4528.00

This catalog indications are approximate and not restrictive

Serie SPS

Ceramic-coated boilers with 2 pipe coils



The SPS boilers with the double coils are suggested for use in conjunction with solar collectors for the production and storage of hot-water.

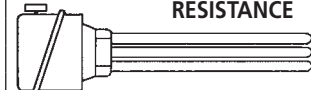
The boiler is porcelain-glassed at 850° C strictly in compliance with the DIN 4753 norm; the magnesium anode, sized proportionally with the surface to be protected, ensure a long boiler durability against corrosion.

The very thick layer of rigid polyurethane with external PVC coated (Ral-2004) makes the hot-water heat insulation optimal, reducing the heating loss at minimum.

With the models 800 and 1000 lt, the insulation is made of 100 mm soft polyurethane layer.

A	Outside boiler diameter
B	Inside boiler diameter
C	Boiler height
D	Hot water outlet
E	Pipe coil inlet
F	Probe connection
G	Water feedback circuit
H	Pipe coil outlet
I	Pipe coil inlet
L	Probe connection
M	Pipa coil outlet
N	Cold water feeding
O	Flange diameter 180 mm
P	Electric resistance connection
Q	Thermometer connection

SPS 200/1000 boiler max working pressure	10 bar
SPS 1500/2000 boiler max working pressure	6 bar
Water max temperature	95° C



RESISTANCE

3 Kw 400 v Tri.

4.5 Kw 400 v Tri.

6 Kw 400 v Tri.

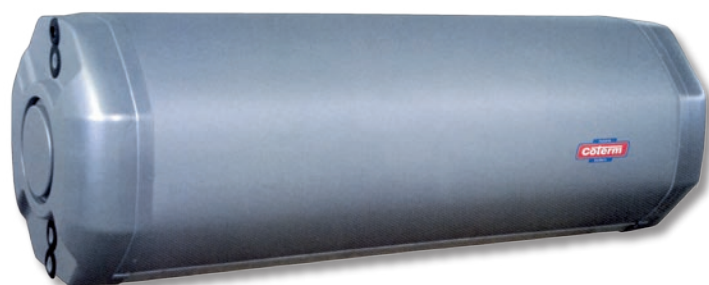
9 Kw 400 v Tri.

MOD. SPS	A	B	C	D	E	F	G	H	I	L	M	N	O	P	Q	S ₁	S ₂	I/h - Kw		Kg	€
					5/4"	1/2"		5/4"	5/4"	1/2"	5/4"			6/4"	1/2"	m ²	m ²	S ₁	S ₂		
200	610	500	1290	1060-1"	970	888	860-3/4"	765	675	450	265	155-1"	300	705	1035	0.8	1.5	520-21	980-40	105	968.00
300	610	500	1685	1450-1"	1345	1187	1132-3/4"	977	815	565	265	155-1"	300	925	1450	1	1.5	640-25	980-40	120	1090.00
400	710	600	1670	1420-1"	1305	1130	1185-3/4"	955	860	610	305	175-1"	320	900	1390	1	1.8	640-25	1320-52	142	1248.00
500	760	650	1680	1420-1"	1310	1135	1200-3/4"	960	860	610	305	175-1"	310	910	1330	1	2.1	640-25	1450-58	165	1412.00
800	1000	800	1870	1585-5/4"	1450	1225	1285-1"	1000	895	603	355	235-5/4"	390	970	1470	1.5	2.5	980-40	1750-70	240	2154.00
1000	1000	800	2120	1835-5/4"	1600	1375	1435-1"	1150	1045	700	355	235-5/4"	390	1095	1620	1.6	3.4	1050-42	2430-98	275	2422.00
1500	1200	1000	2225	1930-6/4"	1650	1445	1530-1"	1300	1150	780	450	330-6/4"	580	1250	1745	2	4	1410-57	2470-100	365	4066.00
2000	1400	1200	2180	1770-6/4"	1640	1435	1470-1"	1290	1190	815	490	370-6/4"	620	1240	1640	2	4.5	1410-57	3320-135	435	4852.00

This catalog indications are approximate and not restrictive



Serie BSLO-BSLC



1	Water inlet 3/4"
2	Water outlet 3/4"
3	Bleed 1/2" mod. BSLO - 3/8" mod. BSCL
4	Solar circuit connection 3/4"
5	Solar circuit connection 3/4"
6	Probe connection
7	Magnesium anode
8	Electrical connection 5/4"

The boilers BSLO-BSLC with air-casing are made for water heating using solar collectors. The boiler are designed with material to be whether resistant and externally installed.

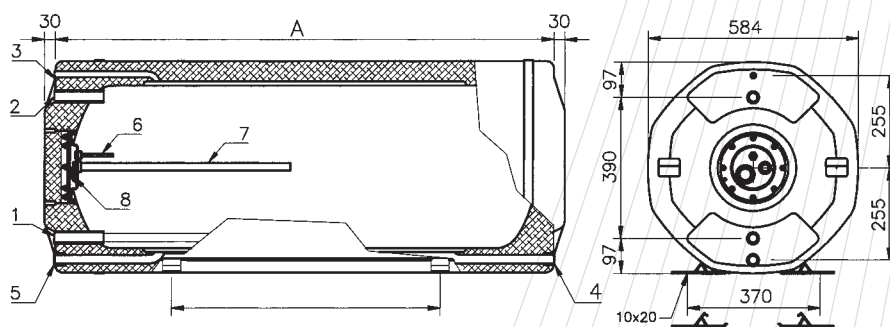
The pipe connections are internally screwend and in the BSCL model are located on the side. The insulation of the accumulated water is realized using a thick layer of rigid polyurethane covered with external aluminium sheet.

The boiler is porcelain-glassed strictly in compliance with the DIN 4753 norm; the magnesium anode ensure a long boiler durability against corrosion.

Water circuit max working pressure	6 bar
Solar collector max working pressure	1.5 bar

Serie BSLO

Solar boiler with octagon external

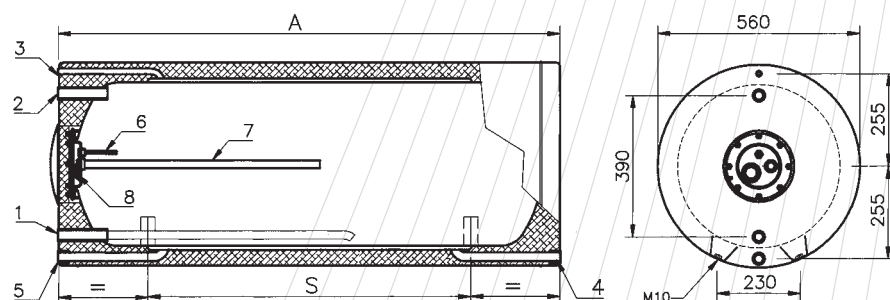


MOD. BSLO	A	S	Weight (Kg)	Gap (litres)	Number of user	Recommended collectors	Collector surface	€
150	1130	600	60	5	n. 2 persons	n. 1	m ² 2	784.00
200	1380	890	76	7	n. 3-4 persons	n. 2	m ² 3.5	854.00
280	1980	1300	110	11	n. 4-5 persons	n. 2-3	m ² 4.5	1110.00

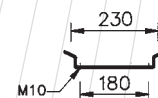
This catalog indications are approximate and not restrictive

Serie BSCL

Solar boiler with cylindrical external



MOD. BSCL	A	S	Weight (Kg)	Gap (litres)	Number of user	Recommended collectors	Collector surface	€
150	1130	600	60	5	n. 2 persons	n. 1	m ² 2	812.00
200	1380	890	76	7	n. 3-4 persons	n. 2	m ² 3.5	904.00
280	1980	1300	110	11	n. 4-5 persons	n. 2-3	m ² 4.5	1176.00



Probe cod. 646.023

This catalog indications are approximate and not restrictive